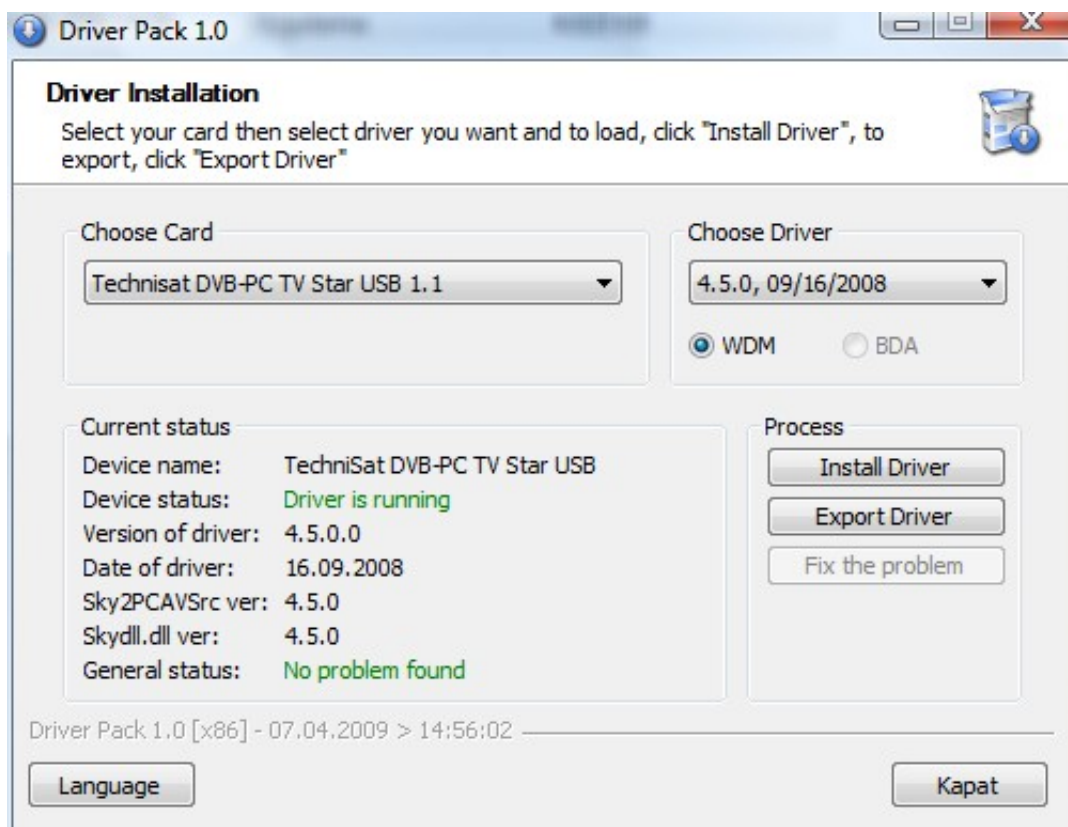


Free Download



[Bt878 Driver Windows 7 X64 Vs X86](#)



[Bt878 Driver Windows 7 X64 Vs X86](#)

Free Download



Always use the latest version of the WDK that supports the version of Windows that you want to target.. For example, if your driver will run on all Windows versions starting with Windows Vista and it will use only features that are provided on Windows Vista, specify Vista for the project configuration.. For example, if you are building a driver that will run only on WDK 8 1, specify Win8.

Guidelines that apply to building kernel-mode drivers. Microsoft introduced signed driver If you are writing drivers for different versions of Windows, the following section provides some guidelines about how you should build those drivers using the Windows Driver Kit (WDK) 8.. This allows you to install unsigned drivers on Vista x64 Windows 7 x64 will behave the same way.. -->Windows 7 x64 vs Windows x86 - Reliability, security, and licensing Home Blog Windows 7 x64 vs.

driver windows 10

driver windows 10, driver windows, driver windows 10 download, driver windows 7, driver windows 10 epson tm-t20ii, driver windows 7 64 bit, driver windows 7 32 bit, driver windows xp, driver windows 8, driver windows 10 32 bit, driver windows 10 64 bit, driver windows 7 offline

1 or WDK 8, Visual Studio, and MSBuild Guidelines that apply to building both user-mode and kernel-mode driversBuild your drivers using the target configurations and platforms that the WDK provides.. Windows x86 - Reliability, security, and licensing 4sysops - The online community for SysAdmins and DevOps.

driver windows 7 64 bit

1 in the Configuration Manager If you want your driver to run on multiple versions of Windows, but without features that are available only on newer versions, build the driver for the oldest version that you want the driver to support.. 1, Windows 8, Windows 7, use the WDK 8 1 and Visual Studio If your driver must run only on a single version of Windows, build the driver for the target configuration and platform that matches your target Windows version.. For example, to build drivers for Windows XP, you must use the Windows 7 WDK But if you are building a driver for Windows 8.

driver windows 7 32 bit

e10c415e6f